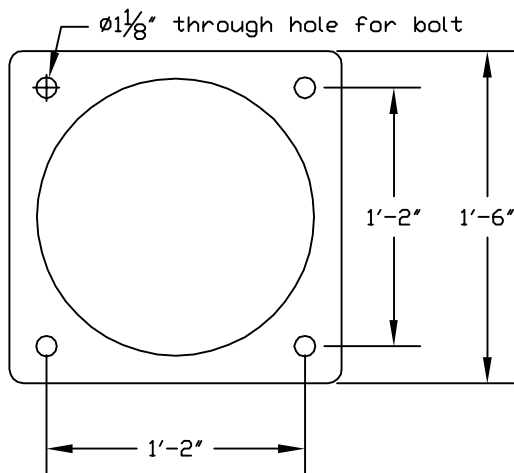
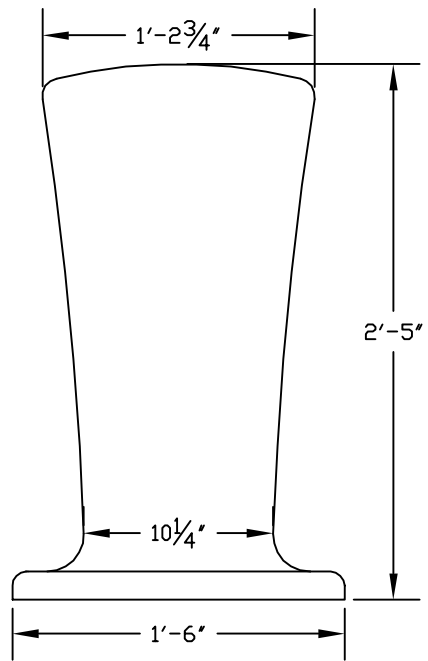


HARBOR



M9021 BOLLARD

- Available in gray iron (App. 215 lbs.) or,
- Cast aluminum (App. 72 lbs)
- With or without provision for chain
- fits over 8" schedule 40 pipe if desired for greater impact resistance
- 7/16" nominal wall thickness
- wide range of finishes available

IRONSMITH BOLLARDS
FOR LANDSCAPE ARCHITECTURE

(800) 338-4766