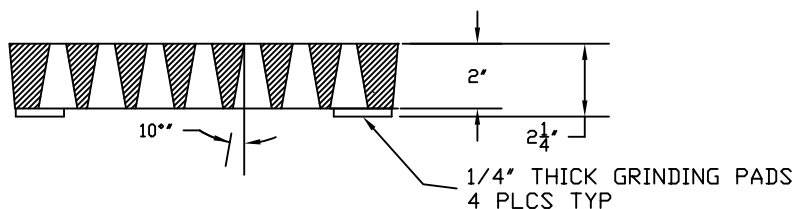
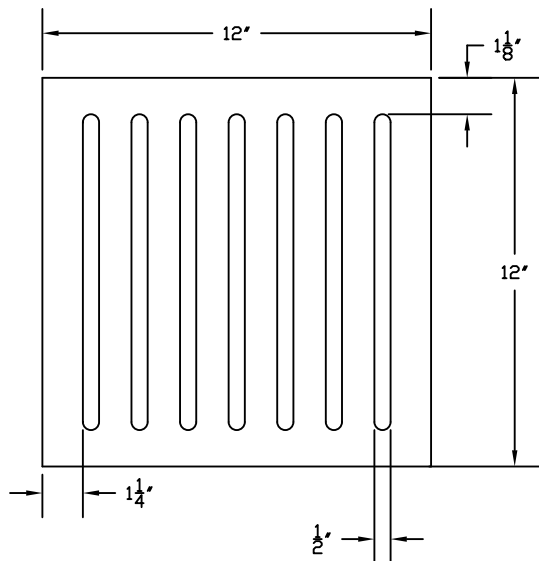
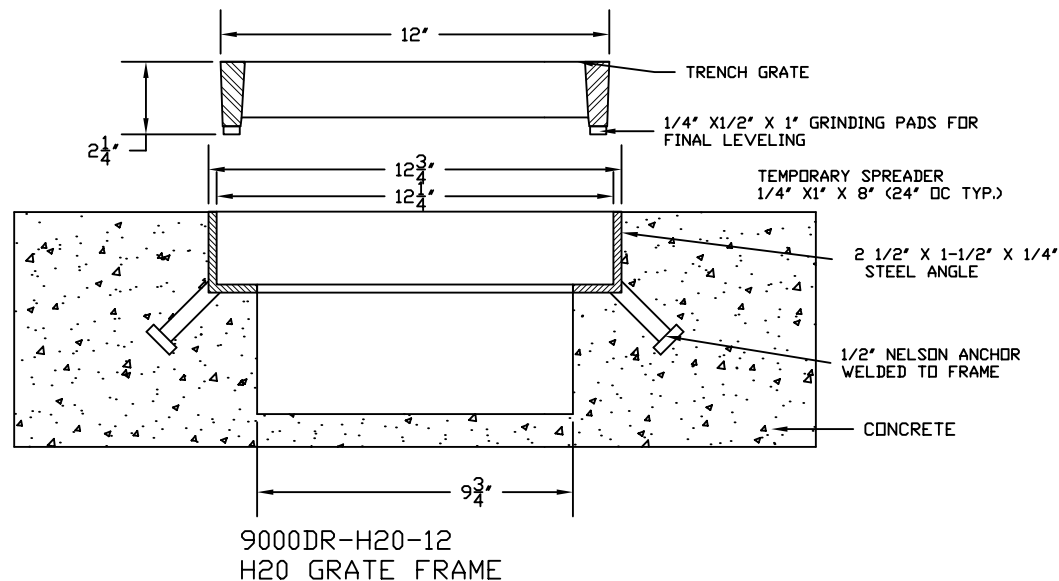


9030DR-12
TRENCH GRATE
12" H2O Loading



9030DR-12
H2O GRATE



9000DR-H20-12
H2O GRATE FRAME

NOTES:

1. CAST GRAY IRON GRATE with STEEL FRAME
2. FOR H2O VEHICLE TRAFFIC
3. 1/2" MAX. SLOT OPENINGS FOR A.D.A. COMPLIANCE

28 Square inches of clear opening. 14 square inches at 50% clogged

This drawing embodies a confidential proprietary design of IRONSMITH, INC. Palm Desert, Ca. All design, manufacturing, reproduction, use, sale, and other rights regarding the same are expressly reserved. This drawing is submitted under confidential relationship for a specific purpose and the recipient agrees by accepting this drawing not to supply or disclose any information regarding it to any unauthorized person or to incorporate any special feature peculiar to this design in other projects. The information in this drawing may be covered completely or in part by patents pending.

IRONSMITH
41-701 Corporate Way #3
Palm Desert, CA 92260
(800) 338-4766
(760) 776-5080 Fax